

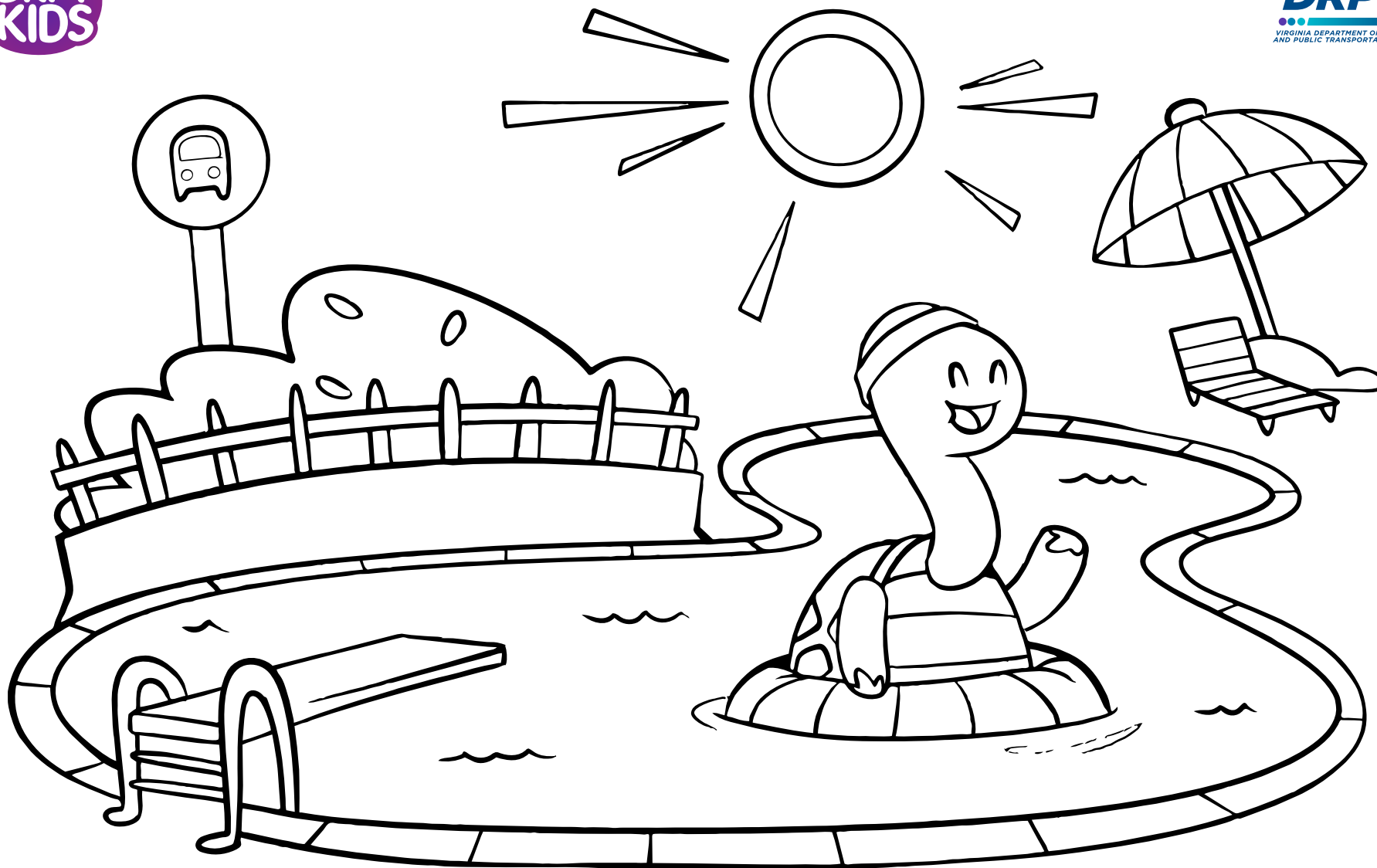
A purple spiral-bound notebook with a white logo in the center. The logo consists of the words 'DRPT' and 'KIDS' stacked vertically in a bold, rounded, purple font, enclosed within a white, hand-drawn speech bubble shape. The notebook has a black spiral binding on the left side.

**DRPT
KIDS**

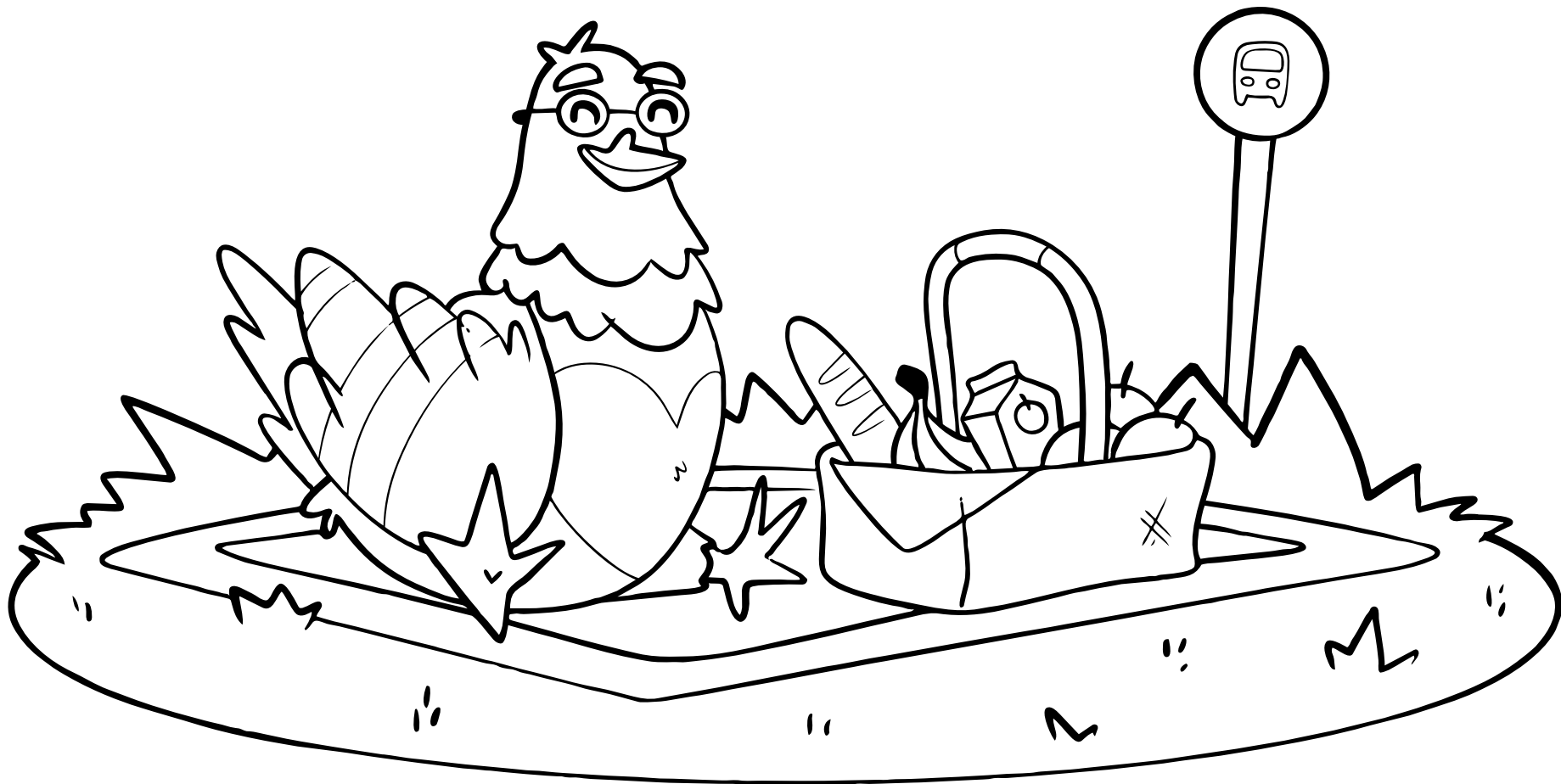
ACTIVITY BOOK



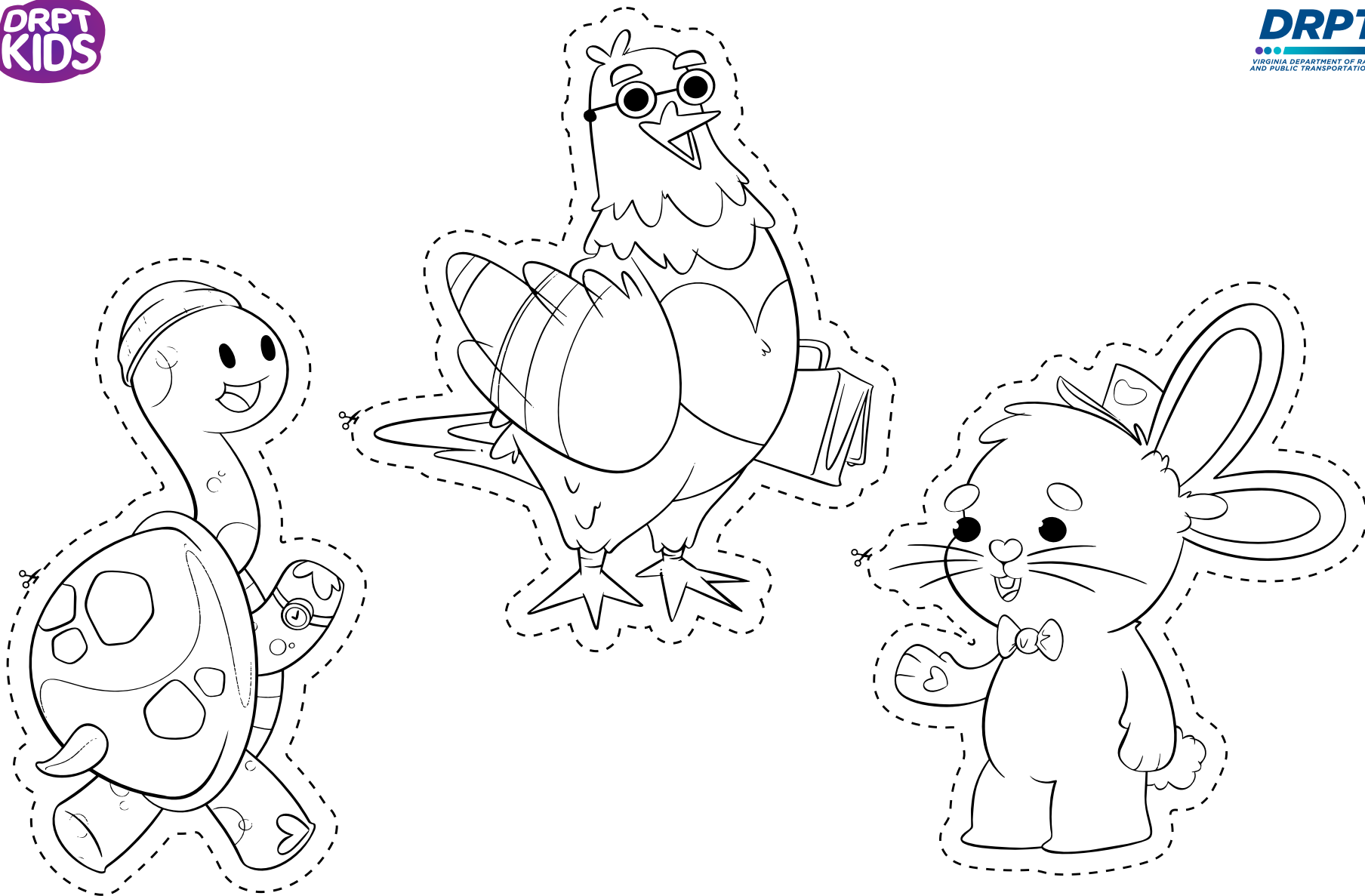
**MILES HOPPED ON THE BUS TO GET A LEMONADE.
COLOR HIM IN SO HE CAN BUY ONE!**



**SHELLBY USED A BUS TO GO SWIMMING.
COLOR IN HER DAY AT THE POOL!**



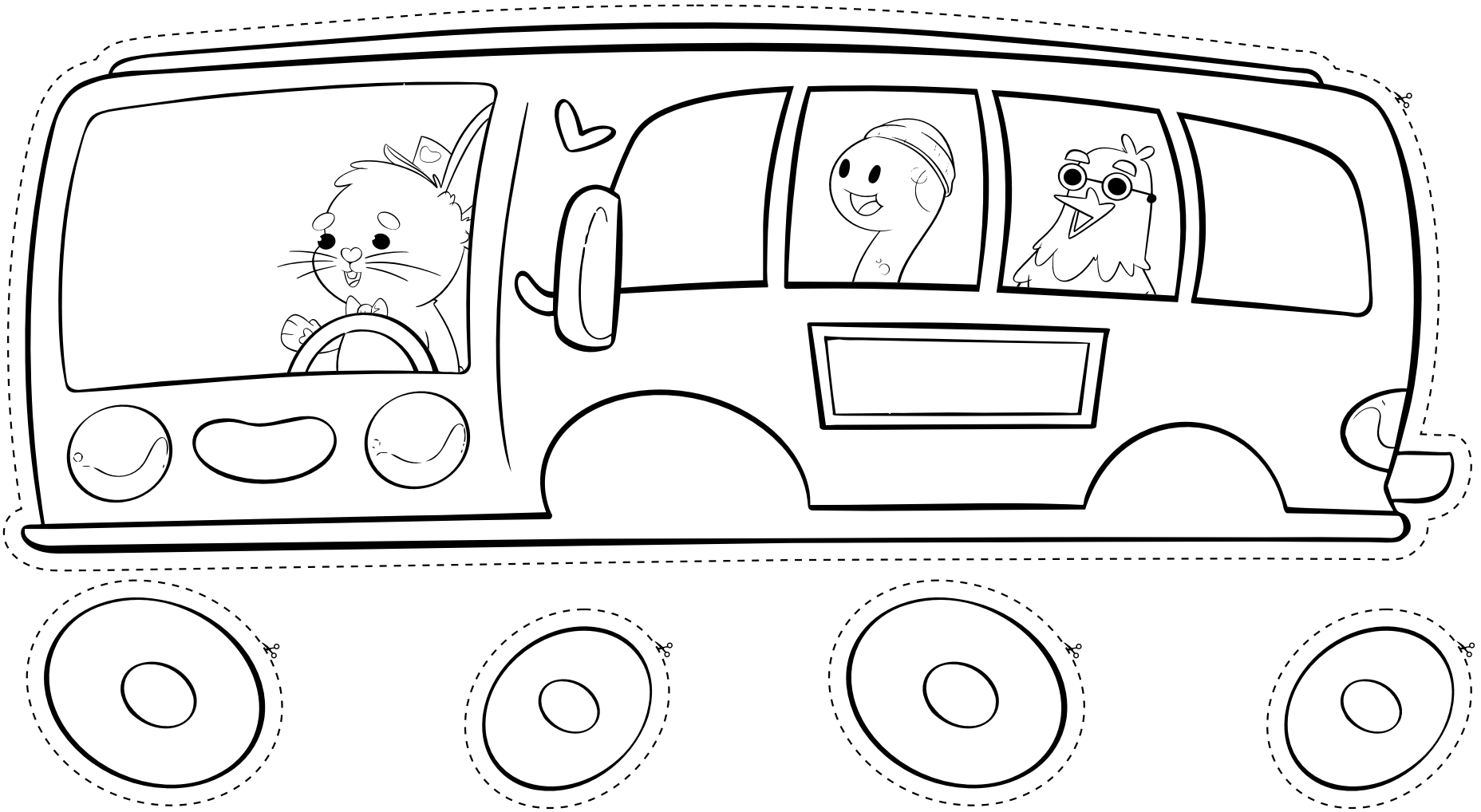
**PERRY TOOK THE BUS TO HAVE A PICNIC IN THE PARK.
COLOR IN HIS FUN TIME!**



**USE CRAYONS, MARKERS, PAINT,
OR WHATEVER YOU HAVE AROUND TO
BRING MILES, PERRY, AND SHELLBY TO LIFE!**

BUILD YOUR OWN BUS!

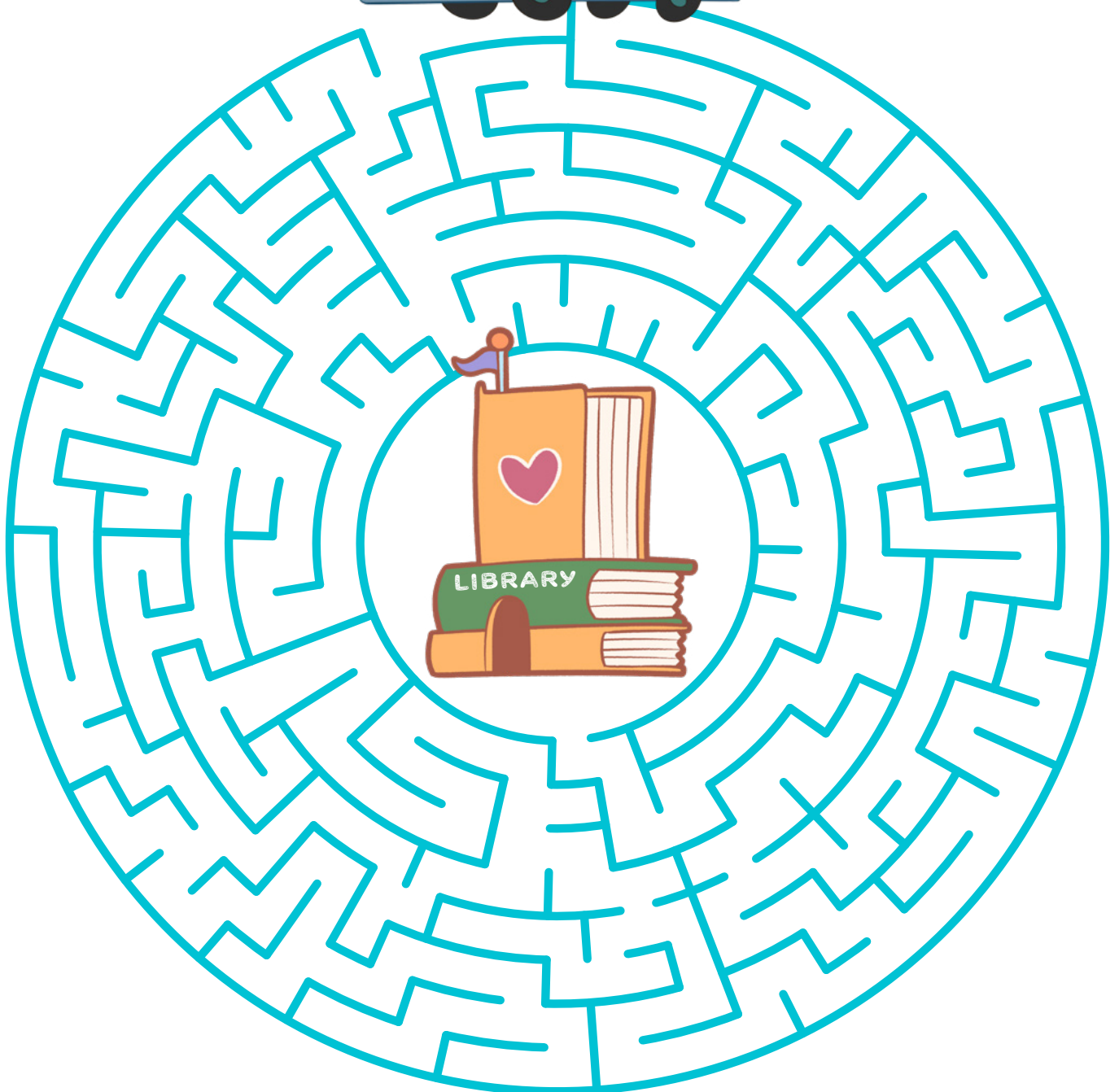
**CUT OUT THE WHEELS AND HELP OUR
FRIENDS GET TO THE PLAYGROUND!**



*NOTE: If you have brass fasteners, use them to make your own spinnny wheels!
If you don't, get creative! Use glue, or anything that's around. Make the bus your own.*

**CAN YOU HELP MILES TAKE
RIDERS TO THE LIBRARY?**

DRAW A LINE TO THE END!





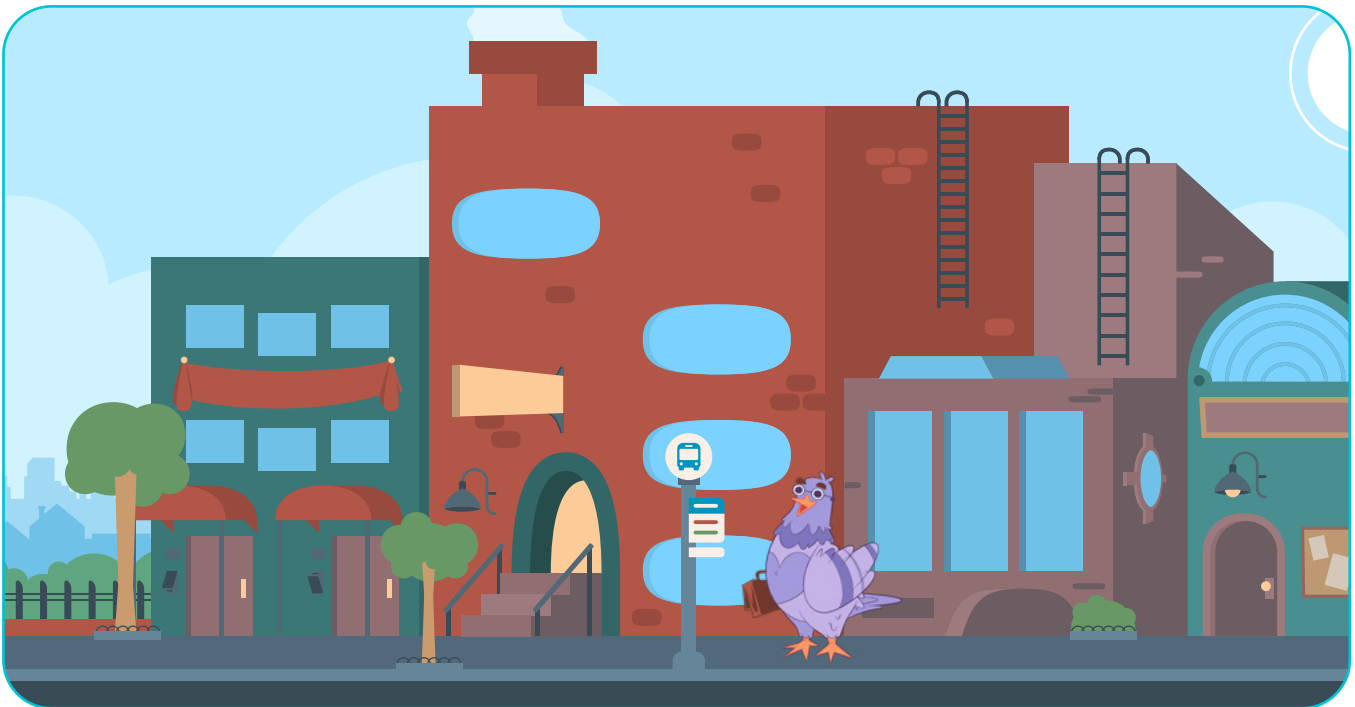
PLAN FOR YOUR TRIP

WE'RE RIDING THE BUS TODAY!
WHAT WILL YOU BRING WITH YOU?
DRAW 3-5 THINGS YOU'LL TAKE
WITH YOU ON THE TRIP!

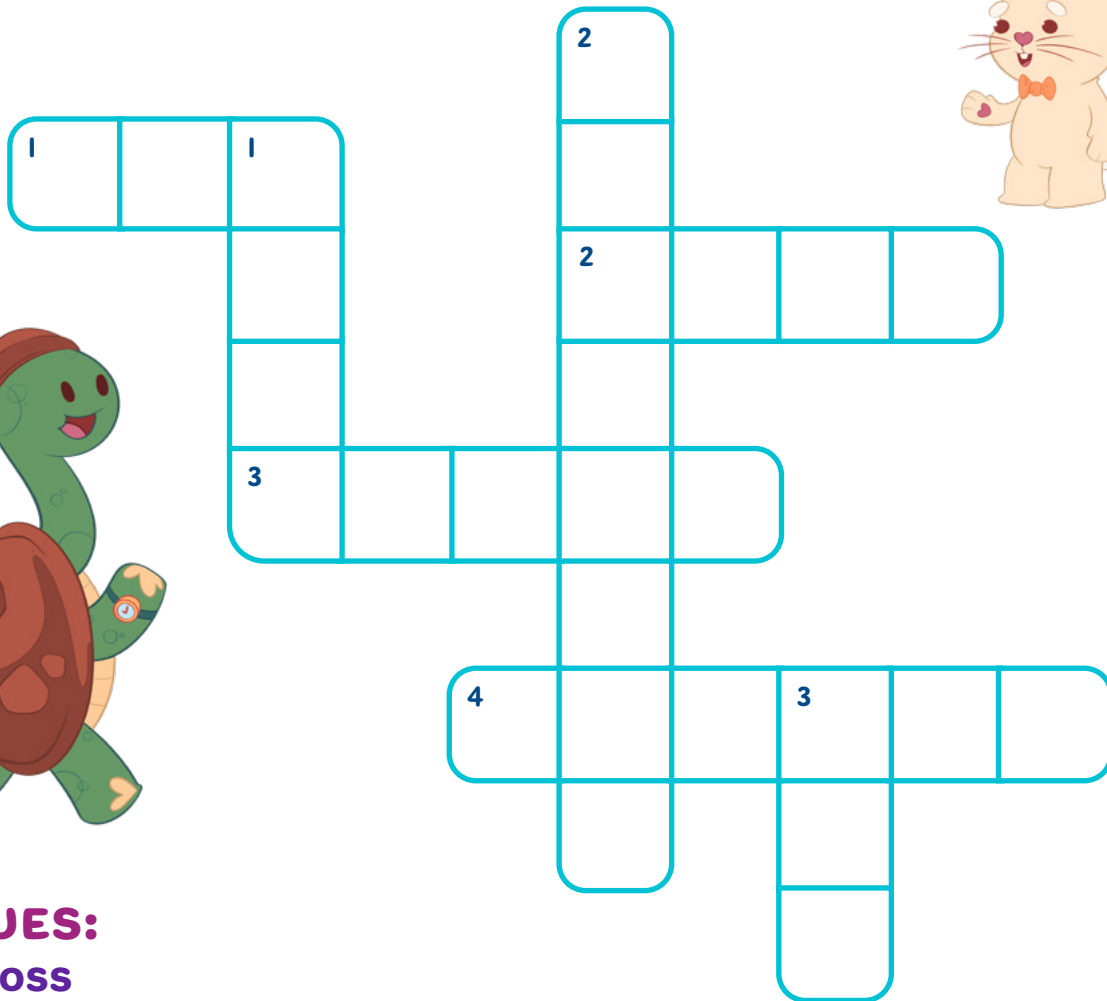


SPOT THE DIFFERENCE!

CAN YOU FIND ALL 15 DIFFERENCES?



USE THE CLUES BELOW TO FILL OUT THE ANSWERS BELOW AND ACROSS!



CLUES:

ACROSS

1. IT'S BIGGER THAN A CAR. IT TAKES PEOPLE TO WORK AND SCHOOL.
2. THIS IS THE NAME FOR THE TRACK THE TRAIN RIDES ON. IT'S ALSO WHAT WE CALL THE THING YOU GRAB ONTO WHEN YOU'RE ON THE TRAIN. YOU CAN ALSO GRAB ONTO ONE WHILE USING THE STAIRS.
3. A REALLY LONG LINE OF CARS. IT ROLLS ON METAL TRACKS INSTEAD OF A ROAD.
4. THE PAPER, CARD, OR OTHER THING YOU BUY SO YOU CAN GO ON YOUR RIDE.

DOWN

1. THE CHAIR YOU SIT ON WHEN YOU ARE RIDING INSIDE A BUS OR TRAIN.
2. THE STATE WHERE WE LIVE. IT STARTS WITH A V!
3. A YOUNG PERSON WHO LIKES TO PLAY AND LEARN. THAT'S YOU!